



Diamond Tub & Showers Spec Sheet

Model: S 323473

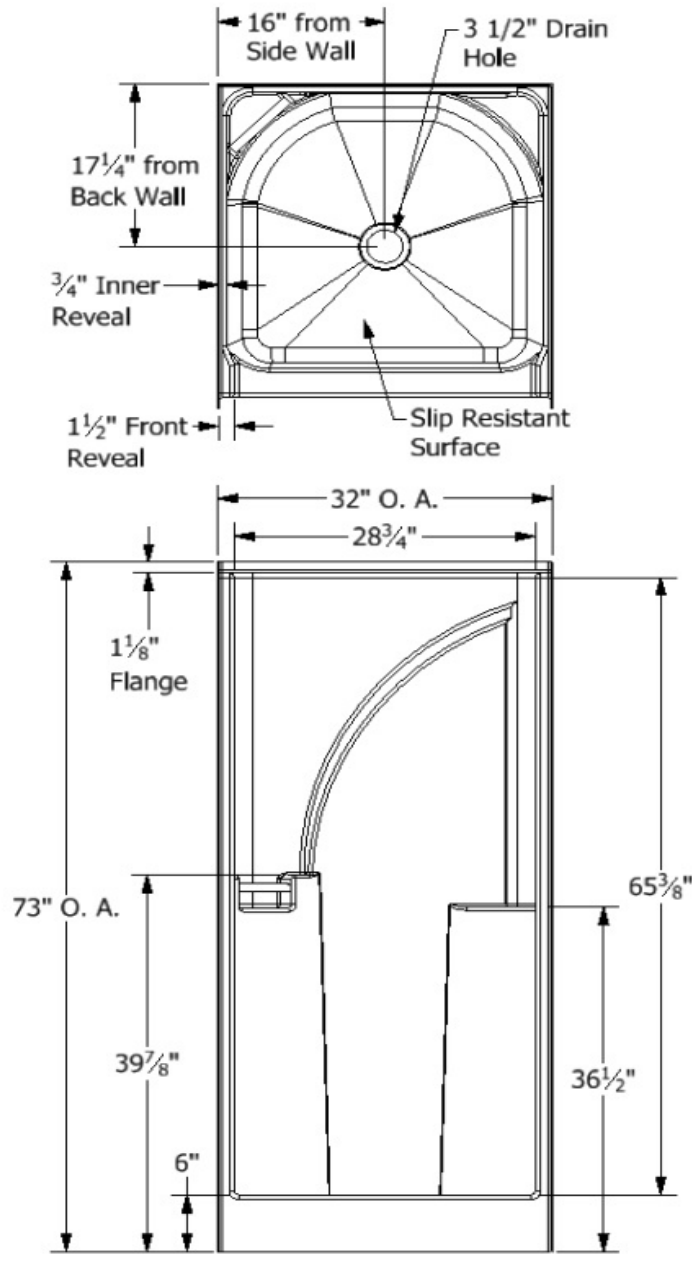
Description: One Piece Shower Unit

Specifications

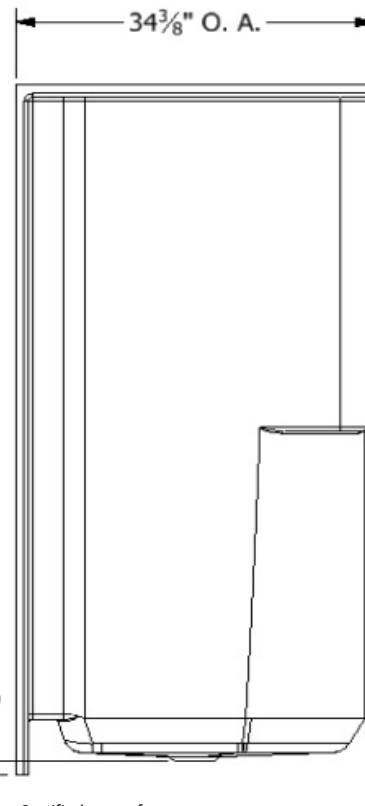
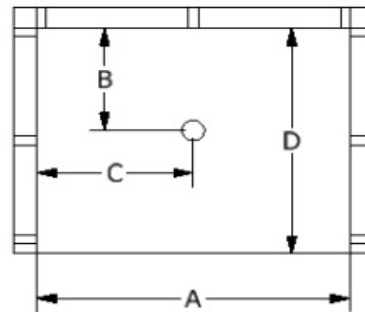
Model #	Material	Wall Finish	Pieces	Drain	Threshold Height	Net Weight Lbs.
S 323473	Fiberglass/ Gelcoat	Smooth	1	C	6"	
Enclosure Opening						
Width	Height					
28 3/4"	65 3/8"					

Framing Dimensions

A	B	C	D
32 1/8"	17 1/4"	16"	34 3/8"



Framing Specifications



Certified to conform to HUD/UM73b, ANSI Z124.1, and ASTM E- 162 Flame Spread Rating 200 or less and is under a program of factory inspection.

Manufactured by Frontline Mfg., Inc. Leesburg, IN



12/20/12